



Legened

- Medium flow
- High flow
- Flooded area in Jan. 2015
- Flat areas (< 0.5% slope)
- District Boundaries

WASH Center

- Active
- Completely damaged

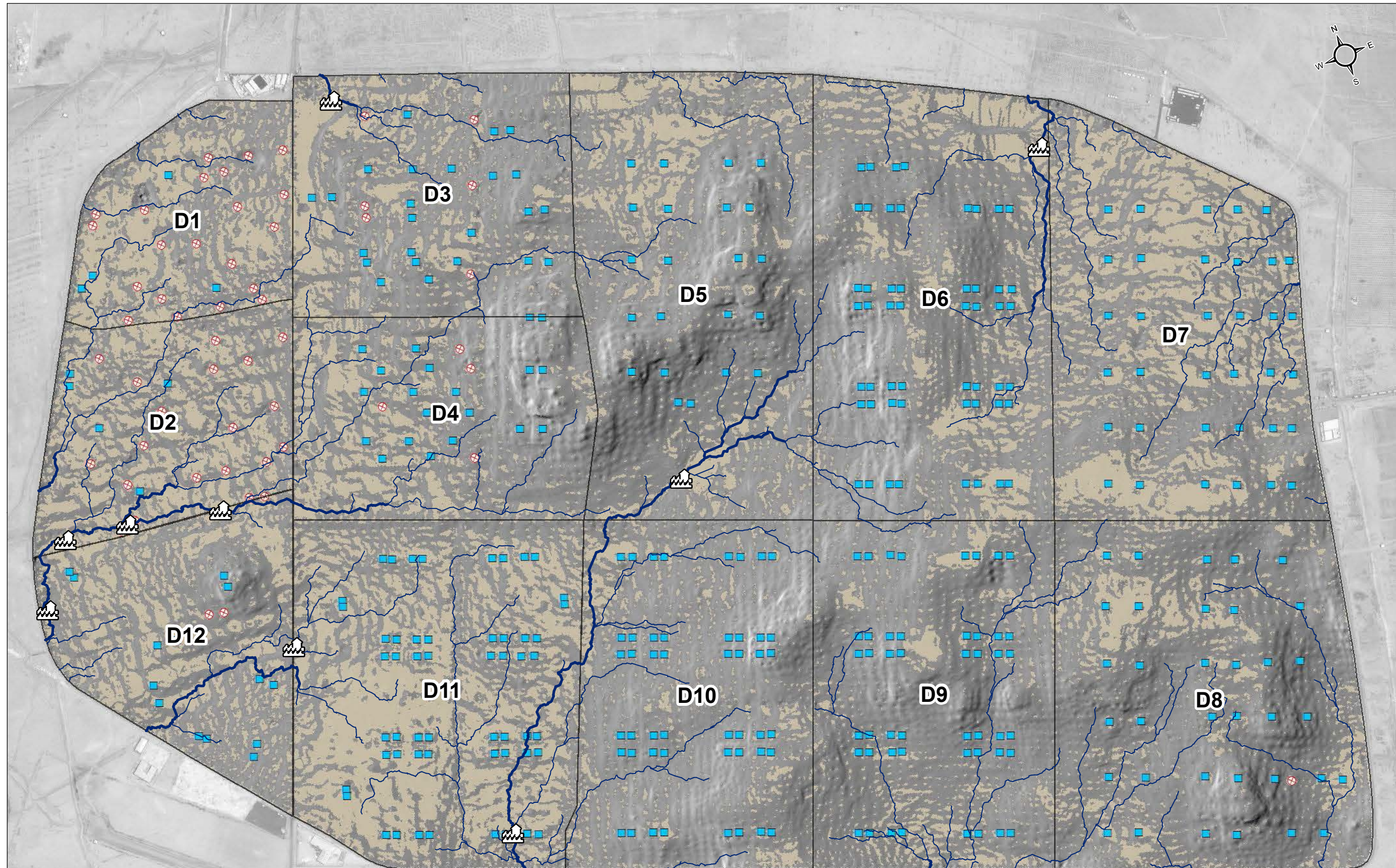
Data Sources:
Camp facilities -- UNHCR
Elevation -- UNHCR

Satellite Acquisition Date:
26/04/2015 by Digitalglobe
Provided by: UNOSAT

Projection: WGS 1984 UTM Zone 37N

File: JOR_Map_Zaatari_CCM_
FloodRisk_Oct2015_A3

Note: Data, designations and boundaries
contained on this map are not warranted to be
error-free and do not imply acceptance by
partners, associates or donors mentioned on
this map.



Areas prone to flood risk have been estimated based on elevation and water flow direction, in addition to observations from previous winter flooding. In case of heavy rain or snow, these lines represent the channels through which water runoff will predominantly flow and collect water. The thicker blue lines represent channels of higher flow accumulation, and thus areas prone to flooding. Elevation point data with an accuracy of 2.5 meters was interpolated to create the DEM (Digital Elevation Model). The water flow channels as shown on the map were created based on the DEM using hydrological analysis techniques. The location of wash centres are shown in the map for reference. Damaged wash centres have a hole in the ground where the wash centre used to be present. During rainfall events, water collects in these holes.

Scale 1:9,000

0 50 100 200 300 400 500 Meters