



USAID/Jordan 2017 MEL Conference Sessions' Abstracts and Speakers' Biographies

Session I - Demystifying CLA: What, Why & How? 10:45 - 12:15 (Day I)

Collaborating, learning, and adapting have always been part of USAID's work, and USAID missions and implementing partners are already practicing CLA in some way. The inclusion of Collaborating, Learning and Adapting (CLA) in the Program Cycle makes these efforts more systematic, intentional and resourced as a way to improve development effectiveness. During this session, participants will be introduced to the CLA Framework and hear a case of CLA in action. They will discuss and share with one another their own examples of CLA practices and approaches.



Dr. Stacey Young (Speaker)

Senior Learning Advisor and CLA Team Lead - USAID Bureau for Policy, Planning and Learning, Office of Learning, Evaluation and Research

Dr. Stacey Young leads a strategic learning effort to increase the effectiveness and impact of USAID's development efforts by catalyzing collaborating, learning and adapting (CLA) throughout USAID, among its implementing partners, and with country development actors.



Ms. Jessica Ziegler (Speaker)

Senior Learning Specialist - USAID Learning and Knowledge Management (LEARN) Contract

Jessica Ziegler works in international development at the intersection of learning, knowledge management, and communications with eight years of experience supporting development efforts, especially in the strategic use of knowledge for stronger programming. As a Sr. Learning Specialist on USAID LEARN, her primary role is to support USAID missions and implementing partners as they integrate CLA.



Session 2 - Evaluation and Assessments

12:15 - 13:30 (Day 1)

This session has two parts. The first part aims to equip M&E practitioners with a practical understanding of the two main types of Impact evaluation design approaches (Randomized Control Trials and Quasi-experimental). The second part of the session focuses on utilization of the data generated as a result of evaluations, whether impact or performance.



Mr. Ali Hayat (Speaker)

Senior M&E Specialist – Monitoring and Evaluation Support Project (MESP)

Senior Learning Advisor - USAID's Policy, Planning and Learning Bureau.

Ali Hayat is the Senior M&E Specialist at the Jordan Monitoring and Evaluation Support Project (MESP). He has worked on designing and conducting research projects focused on political and economic development, conflict and stabilization, in over 20 countries, including Jordan, Pakistan, Afghanistan, Iraq, Lebanon and South Sudan. He did his Ph.D. coursework in Comparative Politics at the City University of New York.



Ms. Maram Barqawi (Speaker)

Senior Performance M&E Specialist - Water Management Initiative (WMI)

Member of the Monitoring and Evaluation team in the USAID/Jordan Program Office. With 10 years of experience as a Monitoring and Evaluation Specialist, program coordinator, and communication officer. Using my experience as M&E Specialist I bridged it with Information Systems while I now manage the USAID Jordan Performance Management System and Mapping to effectively tell the story through data and visualization.



Ms. Rand Milhem (Speaker)

Senior M&E Specialist - Integrated Services, Indigenous Solutions (INTEGRATED)

Ms. Milhem possesses extensive experience and knowledge in Monitoring and Evaluation (M&E). She has conducted baseline assessments, evaluations, and M&E trainings for the USAID, ILO, WFP, Mercy Corps, in Jordan, Turkey, Yemen, Tunisia, Morocco, and Oman.

Ms. Milhem is currently leading an impact evaluation for proof-of-concept for an ICT-based literacy platform funded by All Children Reading – Grand Millennium Challenge in 20 public schools in Jordan to ensure program design also ensure that M&E systems reflect program design and support project learning and course correction for maximized project outcomes.



Session 3 - GIS Techniques in Developing an Effective M&E System

15:30 - 16:45 (Day 1)

The session aims to present a comprehensive insight to the role of GIS technology in developing an effective M&E-GIS for decision making as a way towards sustainability and effectiveness.

Three main topics will be covered: (1) definition of the fundamental requirements for effective M&E-GIS and how to develop for your situation, (2) Key GIS techniques for efficient M&E process; Geospatial Analysis Technique, and (3) An illustrated example to ensure session's objectives.



Dr. Maha Al Tarawneh (Speaker)

Water Data Res., IKMS, GIS Expert - Water Management Initiative (WMI)

(PhD in Geo-Modelling using GIS Technology from University of Cape Town/South Africa. MSc in Applied Remote Sensing from Cranefield University/England. BSc in Earth Sciences from Jordan University. Dr. Maha worked in the Royal Jordanian Geographic Center as a researcher and trainer. Head of GIS and Remote Sensing Division at the Natural Resources Authority/Ministry of Energy. Was a member in the National Strategy of GIS in Jordan. At present, GIS expert at the Water Management Initiative, A USAID-funded project, implemented by Tetra Tech International Inc., ORIENT Engineering Consultancy (sub-contractor).



Ms. Reem Omar (Panelist)

Development Program Specialist- Performance Management/GIS - USAID Program Office

Member of the Monitoring and Evaluation team in the USAID/Jordan Program Office. With 10 years of experience as a Monitoring and Evaluation Specialist, program coordinator, and communication officer. Using my experience as M&E Specialist I bridged it with Information Systems while I now manage the USAID Jordan Performance Management System and Mapping to effectively tell the story through data and visualization.



Mr. Nizar Adarbeh (Panelist)

Chief of Party - USAID Sustainable Cultural Heritage through Engagement of Local Communities Project (SCHEP)

Nizar Al Adarbeh has more than 10 years of experience in sustainable tourism development, cultural and natural resources management, tourism development projects working with local, national and regional projects and initiatives. He is currently a Chief of Party (COP) for USAID-Sustainable Cultural Heritage through Engagement of Local Communities Project (SCHEP) at the American Center of Oriental Research (ACOR) and a consultant with current important tourism development projects in Jordan including running as a Biodiversity in Tourism Sector Legal and Institutional Frameworks Development Expert for the UNDP Mainstreaming Biodiversity Conservation in the Tourism Sector Development in Jordan (BITS) Project, and a Project Management Consultant for the Restoration and Rehabilitation of the Roman Nymphaeum in Amman, funded by The U.S. Ambassadors Fund For Cultural Preservation (AFCP).



Session 4 - New Approaches to MEL

9:00 - 10:30 (Day 2)

How can we monitor and evaluate effectively in a dynamically changing and unpredictable context? USAID's operational guidance suggests complementary monitoring approaches for situations where results are difficult to predict due to dynamic contexts or unclear cause-and-effect relationships. Emerging evaluation approaches fill a similar need. Participants are introduced to three basic principles that guide better M&E practice. The presentation closes with an overview of three promising approaches -- Causal Link Monitoring, Outcome Harvesting and Most Significant Change.



Ms. Heather Britt

Senior M&E Specialist - Office of Learning, Evaluation and Research (LER) of the Bureau for Policy, Planning and Learning (PPL)

Heather Britt is a Senior M&E Specialist with the Expanding Monitoring and Evaluation Capacities (MECap) task order managed by the Office of Learning, Evaluation and Research (LER) of the Bureau for Policy, Planning and Learning (PPL). She builds the capacity of USAID and implementing partner staff to commission, manage, conduct, and learn from innovative M&E approaches. Ms. Britt served as the technical lead for USAID's Complexity-Aware Monitoring and Evaluation (C-AM&E) initiative. She authored USAID's Complexity-Aware Monitoring Discussion Note, co-authored the Outcome Harvesting brief, and other papers on innovative solutions to M&E challenges. Ms. Britt has more than 20 years of experience in evaluation, technical assistance, capacity building and project management. She received her MA in Sociology from Boston College.



Session 5

New Technologies in MEL

10:30 – 11:45 (Day 2)

The session will focus on emerging trends and challenge in MEL, and review a collection of technological solutions that address them. Thematic elements include getting data from beneficiaries and managing data that is messy and unstructured



Mr. Rafael Pilliard Hellwig (Speaker)

M&E Advisor - USAID Local Enterprise Support Project (LENS)

Rafael Pilliard Hellwig is a research consultant passionate about data science and sustainable development. He currently advises USAID Jordan's Local Enterprise Support Project (LENS) with Monitoring & Evaluation, coordinating data collection, analytics, and staff training related to Micro- and Small- Enterprises (MSEs). Prior to joining the project, Rafael consulted for clients in Oman, Qatar, Saudi Arabia, and the UAE on their corporate sustainability strategies. Rafael also worked extensively for AIESEC, the world's largest student-run organization—leading the non-profit's global research on finance and legality and serving as its country director in Oman. His corporate experience extends across consulting projects in oil and gas, financial services, investment, tourism development, banking and municipal government.



Mr. Mahdi Mansour (Speaker)

M&E Advisor - USAID Energy Sector Capacity Building (ESCB)

Mahdi Z. Mansour has over 15 years of relevant work experience developed through working in different key positions at several USAID Activities and Emergency Programs. He is currently leading the monitoring and evaluation team at the USAID Energy Capacity building Activity (ESCB). With a master's degree in computer science and diploma in technologies for M&E, Mr. Mansour is able to capitalize and leverage on his experience to design and implement M&E systems, plans and tools.



Session 6 - Knowledge Management and Working Through the Knowledge Cycle 12:15 - 13:45 (Day 2)

Knowledge management (KM) is crucial to achieving USAID's mission of ending world poverty and promoting resilient, democratic societies. Effective KM feeds into adaptive management by providing the necessary information and evidence that allows us to respond to complex, changing contexts. But between knowledge generation and its use/application, there are other critical steps to the full Knowledge Cycle: Capture, Synthesis, and Sharing. In this session, panelists will share their experiences across the Knowledge Cycle and offer relevant KM tools and resources.



Dr. Stacey Young (Speaker)

Senior Learning Advisor and CLA Team Lead - USAID Bureau for Policy, Planning and Learning, Office of Learning, Evaluation and Research

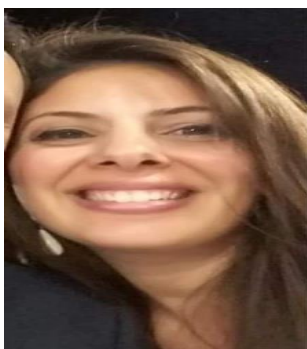
Dr. Stacey Young leads a strategic learning effort to increase the effectiveness and impact of USAID's development efforts by catalyzing collaborating, learning and adapting (CLA) throughout USAID, among its implementing partners, and with country development actors.



Ms. Jessica Ziegler (Panelist)

Senior Learning Specialist - USAID Learning and Knowledge Management (LEARN) Contract

Jessica Ziegler works in international development at the intersection of learning, knowledge management, and communications with eight years of experience supporting development efforts, especially in the strategic use of knowledge for stronger programming. As a Sr. Learning Specialist on USAID LEARN, her primary role is to support USAID missions and implementing partners as they integrate CLA.



Ms. Iris Sawalha (Panelist)

M&E/Knowledge Management Consultant - Independent

A results-driven professional with over ten years progressive experience in leading the development of M&E systems for humanitarian and development programmes in MENA region. As an M&E/knowledge management consultant, her role is to support organizations in improving efficiency and effectiveness of project/programme management through the design, implementation and scale up of innovative techniques and technologies.



Continued - Session 6 - Knowledge Management and Working Through the Knowledge Cycle
12:15 - 13:45 (Day 2)



Ms. Maha Bseiso (Panelist)

Performance Management Support Manager - Monitoring and Evaluation Support Project (MESP)

With over a decade of development sector experience with several USAID activities, Maha Bseiso is currently leading the MIS/GIS department within the Monitoring and Evaluation Support Project (MESP). The MIS/GIS department played a key role in the Mission's rollout of DevResults, the design and management of KaMP (Jordan Development Knowledge Management Portal), and the layout of the GIS the Mission's system.



Ms. Hayat Askar (Panelist)

M&E Manager - Human Resources for Health Activity (HRH2030)

Monitoring and Evaluation Manager with a demonstrated history of working in the international development sector, with international donors and partners from both the governmental and private sector. Throughout her experience with USAID, Hayat Askar role includes development of MEL systems and tools, providing guidance to staff and beneficiaries, contributing to Program Evaluation and impact assessment tasks and development of a variety of data visualization tools and Dashboards.

Session 7 - Gender in M&E
14:45 – 16:15 (Day 2)

This session will discuss the importance of gender in M&E, highlight the flow of M&E in the project cycle, and will further discuss how to integrate gender considerations into each step of the project cycle. Other special considerations when it comes to including gender into M&E in various sectors will also be examined as well as gender discrimination as most prevalent form of social exclusion, and finally, the session will cover gender mainstreaming and targeted projects to address gender gaps.



Ms. Ebba Augustin (Speaker)

CEO - SAANED for Philanthropy Advisory

Ebba Augustin has been working 30 years as development professional, program manager, advisor and gender specialist in Africa, Asia, Europe and the Arab World. She is currently CEO of the Amman based SAANED for Philanthropy Advisory with residency in Berlin/Germany and Amman/Jordan.